

TRADE NEWSLETTER

www.uniquebuilding.com.au



February 2026

UBS Highlight



UBS continues to operate as an ISO-accredited builder, maintaining the highest standards for Environmental, Quality, and Safety procedures.

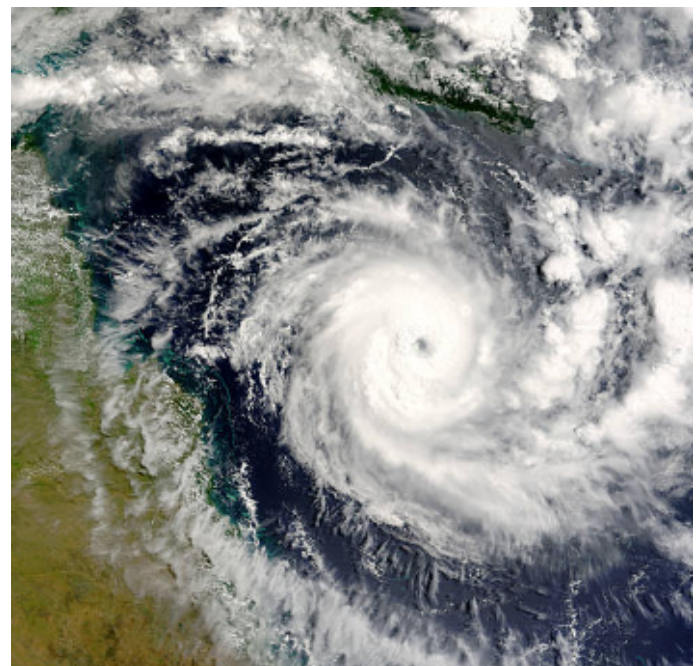
Natural Disasters

February 2026 is all hands on deck!

Extreme weather events experienced in **SE Queensland Hailstorms & NSW / Victoria Bushfires & Storms** (December 2025 to January 2026)

February 2026 Newsletter features :

- The **UBS Project Team Out/About**
- Important Role of **Assessors**
- Don't miss out on our feature **Trades and Project Spotlights**
- **Communication** between our valued UBS Trade Network & Customers



UBS Project Team – Out/About



Our highly skilled and collaborative **UBS Project Team** Out and About working hard, partnering with our Trades Network and Stakeholders to **Deliver Real Solutions!**



Billy Driscoll	Rural Technical Construction Manager	VIC/NSW	0491 154 042
Adam Dew	Melbourne Technical Construction Manager	VIC	0491 151 685
Kain Robins	Senior Project Manager	VIC/NSW	0456 020 300
Lucian Davis	Senior Project Manager	VIC/NSW	0491 070 428
John Fell	Senior Project Manager	VIC	0493 803 389
Courtney Bradley	Queensland Technical Construction Manager	QLD	0490 538 185
Dom Donato	Senior Project Manager / Large Loss	VIC	0423 575 850
Lasith Fernando	Restoration Manager	All	0491 028 999
Ross Earley	Senior Estimator	All	0468 955 799
Sarah Clifford	Project Operations Team Leader	VIC	0490 443 523

A Warm Thank-You to the following Trades. Keep up the Great Work!

Just J's Painting and Home Improvements who are based in Armstrong Creek, Victoria "continue to impress across UBS insurance repair sites with outstanding response times, clear communication, reliability and exceptional workmanship.

By combining skilled tradesmanship with a strong customer focus, the projects reflect dedication to excellence—reinforcing their reputation as a trusted partner across the UBS network."



B&M Restoration and Building Services who are based in Melbourne, Victoria nominated for "providing exceptional communication updates to stakeholders and going out of their way to assist on urgent and unscheduled jobs."





Image : Jess & Alex attending a home in full PPE for a customer who is immune compromised, allowing a thorough assessment to be completed whilst minimising health risks.

Our Role is Highly Rewarding, Crucial, Challenging & Impactful within the Insurance Industry !

No two days are the same for us! We combine our technical expertise, problem solving, timely communication, adaptation, & compassion to inspect properties, identify the cause(s) of loss & evaluate claim validity against policy coverage to determine costs.

We handle wide ranging claims, from simple ingress assessments to large-loss & Commercial assets. Causes of damage vary, from storm events, escape of liquid, vehicle impact & other insured events outlined in the policy.

Simple Put Were here to help !



WINE TASTING ROOM AT RUTHERGLEN (BULLER WINES)

STORM AND TREE IMPACTS

Summary – Scope of Works

- Veranda & concrete slab throughout the entire building removed & re-built.
- Re-roofing to the entire building was completed with repairs to the main roof structure.
- Internal plaster repairs & painting.

Outcome

- An example of efficiency and good quality workmanship to avoid business loss with minimal downtime!

Thank you to **Jackel Constructions Pty Ltd** and **RT Butler Electrical Pty Ltd** for your help and assistance with this Project !

Courtesy Reminders

TRADES INVOICING

Once jobs are completed, please ensure Tax Invoices are addressed to :

- docs@uniquebuilding.com.au
- In PDF format attached to the email
- The UBS job number (UBS-job number) referenced
- Itemise Labour and Materials

An example Template is contained on the Trade Information <https://www.uniquebuilding.com.au/trade/> section of our website

TRADE ACCESS

Please continue to ensure customers are contacted prior to attending site.

TRADE PARTICULARS

For any changes and/or updates to your business structure, regions serviced, core service offering, including employees, please do not hesitate to contact UBS Trade Partners via email on tradepartners@uniquebuilding.com.au

